



# GEA DAIRY ROTOR T8000 SERIES

High performance rotary parlors  
designed to maximize throughput



**GEA ROTARY  
PARLORS**

PROUDLY MANUFACTURED IN THE USA

**GEA** Engineering  
for a better  
world.

[GEA.com](http://GEA.com)



### Superior productivity

It starts with fast flowing cow traffic and smooth and efficient operator routines.

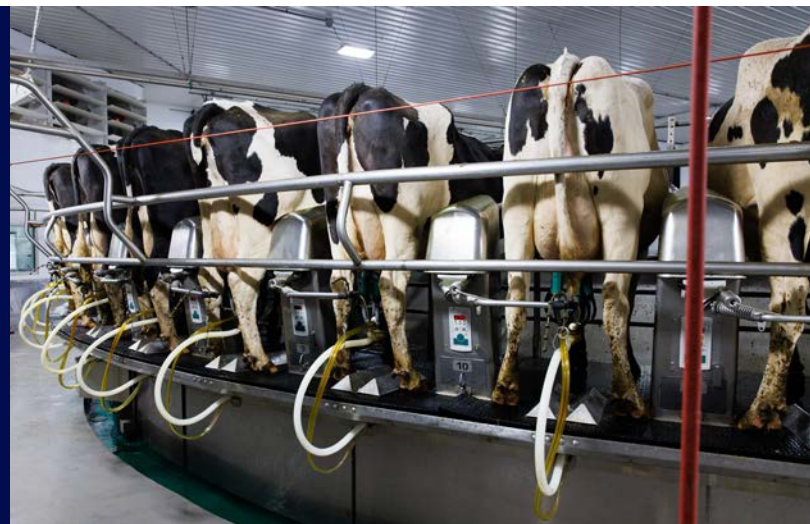
# GEA DAIRYROTOR T8000 SERIES

GEA is a market leader when it comes to rotary installations, continually developing innovative technology and pushing performance at every turn!

For more than two decades, rotary parlors have revolutionized dairy production around the world — increasing cow flow, reducing labor and improving operating efficiency.

Now, the GEA portfolio includes the DairyRotor T8000 series of parlors, featuring a new low-profile rotary stall engineered for fast, smooth cow flow on and off the platform. With our proven technology and experience, we can custom design and layout your milking facility to maximize your throughput and your investment.

**With configurations up to 120 stalls, 75° angled or 90° non-angled stalls, and options for a drop-down or non-drop-down take-off arm, GEA can offer you a truly customized parlor with the DairyRotor T8000.**



# ABOVE THE DECK PERFORMANCE

Efficiently milk hundreds of cows per hour, 24/7!

## Optimized design features

**Low profile cabinet and smooth, rounded stall corners** — the cow-friendly design allows the cows to load in a matter of seconds and also helps to expedite cow exit, maximizing throughput and productivity - along with cow comfort.

**Smart construction** — the new in-line design of the detacher cylinder housing makes for easy serviceability and less maintenance, benefiting your overall total cost of ownership.

**75° or 90° stall angles** — flexible to fit individual farm preference of manager and operator. Stalls are also positioned at a comfortable width to accommodate cows of varying sizes.

**Surface sealed** — the platform provides secure footing, and optional rubber mats are available for comfortable footing.

## Optimized Operator processes

**Unobstructed operator view** — operators can work efficiently and comfortably with easy access to udders during cow prep, unit attachment and during any post-milking procedures.

**PosiForm (drop) or PosiGuide (non-drop) hose support and detacher** — choose the arm that fits your operation. Both are durably built for longevity. The arms properly leverage the unit during milking and remove the unit safely away from the cow's legs upon detach.

**PosiBall hose adjustment** — unique, easy-to-use hose adjustment strap ensures proper unit alignment throughout the milking process.

**EasyStart "button-free" attachment** — pulsation and vacuum supply are automatically started, and the unit is put into "milk-mode" when the operator moves the arm slightly forward. There are no buttons to reach for or push, making for fast and easy unit attachment (only available with the PosiForm arm option).

Choose the arm that fits your operation



PosiForm Drop-down Hose Support — drops units below the deck when not milking and out of the way of the operator.



PosiGuide Non-drop-down Hose Support — milking units stay above the deck after removal from the cow.



#### **In-Line Detacher Cylinder Housing**

New innovative design stores the detacher cylinder in the stall divider. This helps to minimize maintenance and make it much easier to perform service when it is required - helping to benefit your total cost of ownership over time.

# PICK YOUR PLATFORM!

## T8850

Revolutionary roller system for 24/7 operation

**Industrial platform and roller system** — keeps the platform on-center, which reduces friction on the rollers. Rollers last longer, improving stall performance. Stainless steel platform construction provides excellent longevity.

**Sleek design** — recessed parlor skirting meets a slim platform for a clean, functional look. Milking units won't hit the parlor skirting upon detaching, protecting valuable milking equipment; and they also won't interfere with operators.

**Quiet operation** — the undercarriage components run extremely quiet.

**Greater serviceability** — some components can be maintained while running, which means less downtime for regularly scheduled service. Plus, repair parts are more accessible for faster, easier replacement.

## T8900

Durable quad roller system for heavy-duty use

**Wider, stronger deck** — new, more robust design provides durability you can count on 24/7. It also helps to prevent overspray of water over the splash shield into the parlor center to improve cleanliness.

**Durable undercarriage construction** — the unique quad roller system with stainless axle bushing minimizes wear and minimizes service.

**Smooth rolling nylon wheels** — turn for turn they are extremely energy efficient and require minimal care.



### Revolutionary construction

The innovative design of the DairyRotor T8850 includes an all-stainless-steel track plate, a new stainless-steel support wheel assembly, and a reinforced plate connecting the stall sections for superior durability. The platform turns via a revolutionary roller system. When combined, these undercarriage components provide installation accuracy to be sure your parlor stays on-center. This reduces friction on the rollers, allowing them to last longer. The DairyRotor T8850 is built for today's large, 24/7 commercial dairy.

The T8850 has a limited, pro-rated 5-year warranty under the deck.



**DairyRotor T8850 Model**

Industrial platform and roller system



The T8900 has a standard 1-year warranty.



**DairyRotor T8900 Model**

Beam over beam quad roller system



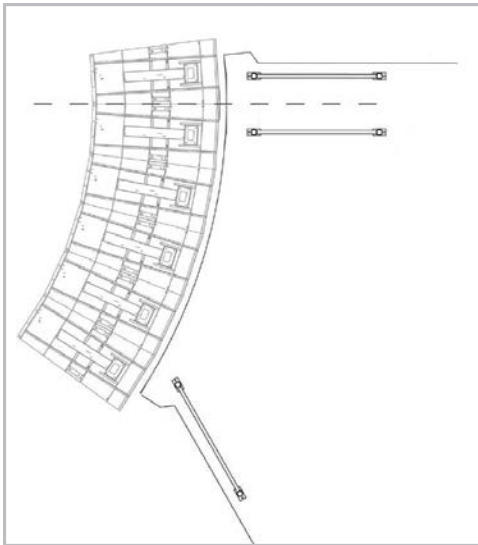


# TWO ENTRANCE STYLE OPTIONS

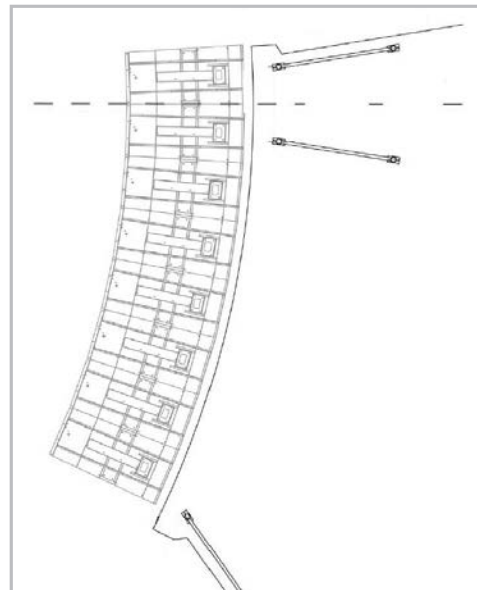
## Further optimizing cow flow.

The standard entrance allows cows to enter the platform one at a time. The V-shaped entrance allows one cow to enter the platform while the second cow establishes position to enter the platform.

This continuous process helps improve cow flow, especially when there are new or slow-moving cows.



Standard entrance: One cow enters at a time.



V-Shaped entrance: Allows a cow to enter the platform while the second cow establishes position. This configuration must be used with PPID (per place individual ID) systems.

## Available in configurations from:

32-120 stalls – DairyRotor T8900

40-120 stalls – DairyRotor T8850

Let the GEA Farm Design team help make your vision a reality by helping you layout your ideal rotary parlor facility.

PPID antennas at every stall are available to maximize data accuracy with the highest identification precision.

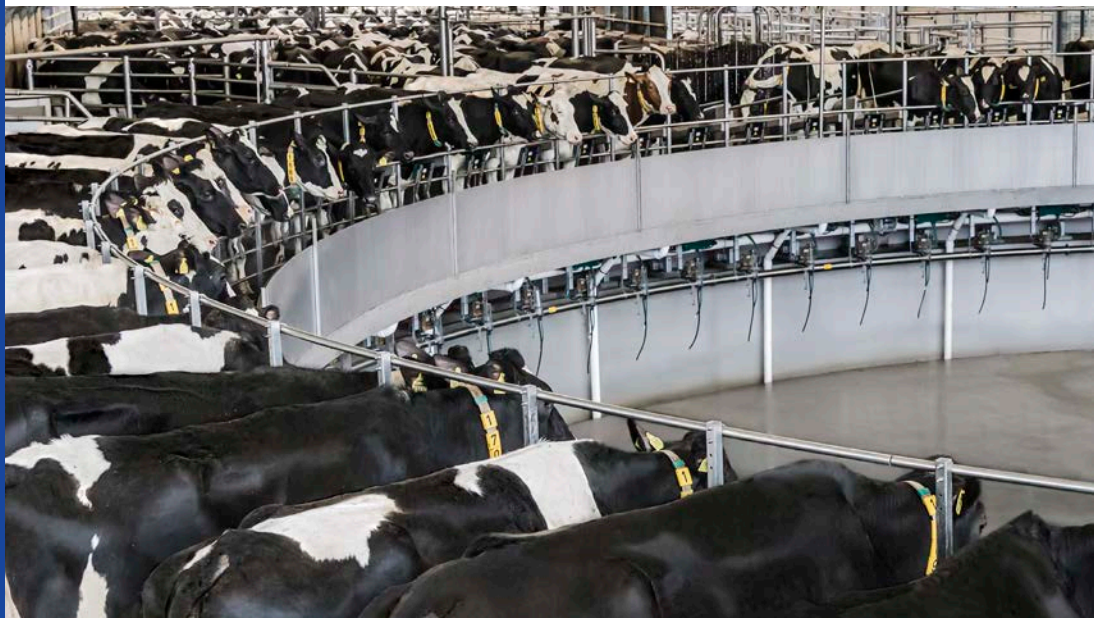
#### Optimized splash shields

Splash shields on the DairyRotor T8850 model are positioned at a 45° degree angle to optimize cow comfort in the stall while maintaining equipment cleanliness in the subway.



#### Designed for cow comfort

The wider platform construction allows the splash shields on the DairyRotor T8900 model to be extended out, under the nose of the cow rather than her neck. This helps to keep the parlor center clean and dry, while providing comfortable stall positioning for the cow.



# FEATURES AND OPTIONS

Designed for today's commercial dairy operations.

**Per Place Identification (PPID)** — antenna blocks at every stall are an option that allows you to secure data on the entire rotation of cows and improve overall data accuracy.

**Easily integrated herd management software** — the DairyRotor T8000 series of parlors work seamlessly with GEA herd management software to keep reliable herd and parlor data at your fingertips 24/7.

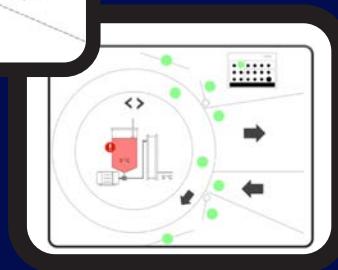
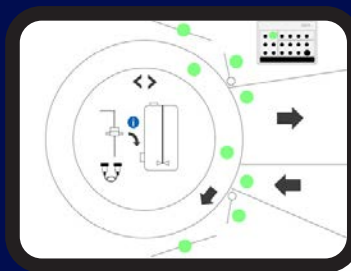
**Full line of detacher options** — any parlor from the DairyRotor T8000 series can be matched with your choice of parlor automation packages — with or without milk yield indicators and milk metering to meet your management needs.

**New CIP drawer** — designed for easy use and effective cleaning while quickly stowing away during milking.

**Electric drive system** — 1.1 kW (1.5 HP) motor provides a smooth start and is the most efficient option on the market. It's a robust drive requiring very little maintenance. Unique vertical drive assembly limits rotary slippage, enhances drive wheel life and ensures easy access for service.

**Subway system** — provides greater access to critical components and a clean, dry working environment.

**Cow-side operator screen** — easy-to-use IPC monitor with real-time data allows operators to view important cow information during milking.



## DairyMilk M6330

### Superior rotary control

The new DairyMilk M6330 smart control system lets herd managers adjust rotary speed by group to maximize efficiency. It also provides easy-to-understand visual symbols for faster diagnostics by the operator such as why the rotary stopped or if assistance is needed at some point along the milk path. Plus, get remote access to the control information from any networked device — phone, tablet or computer.

**GEA Farm Technologies, Inc.**

1385 N. Weber Road, Romeoville, IL 60446 USA  
Toll Free: 1.877.WS.DAIRY or 1.877.973.2479

**GEA Farm Technologies Canada Inc.**

4591 boul. St-Joseph, Drummondville, QC Canada J2A 0C6  
Toll Free: 1.877.WS.DAIRY or 1.877.973.2479